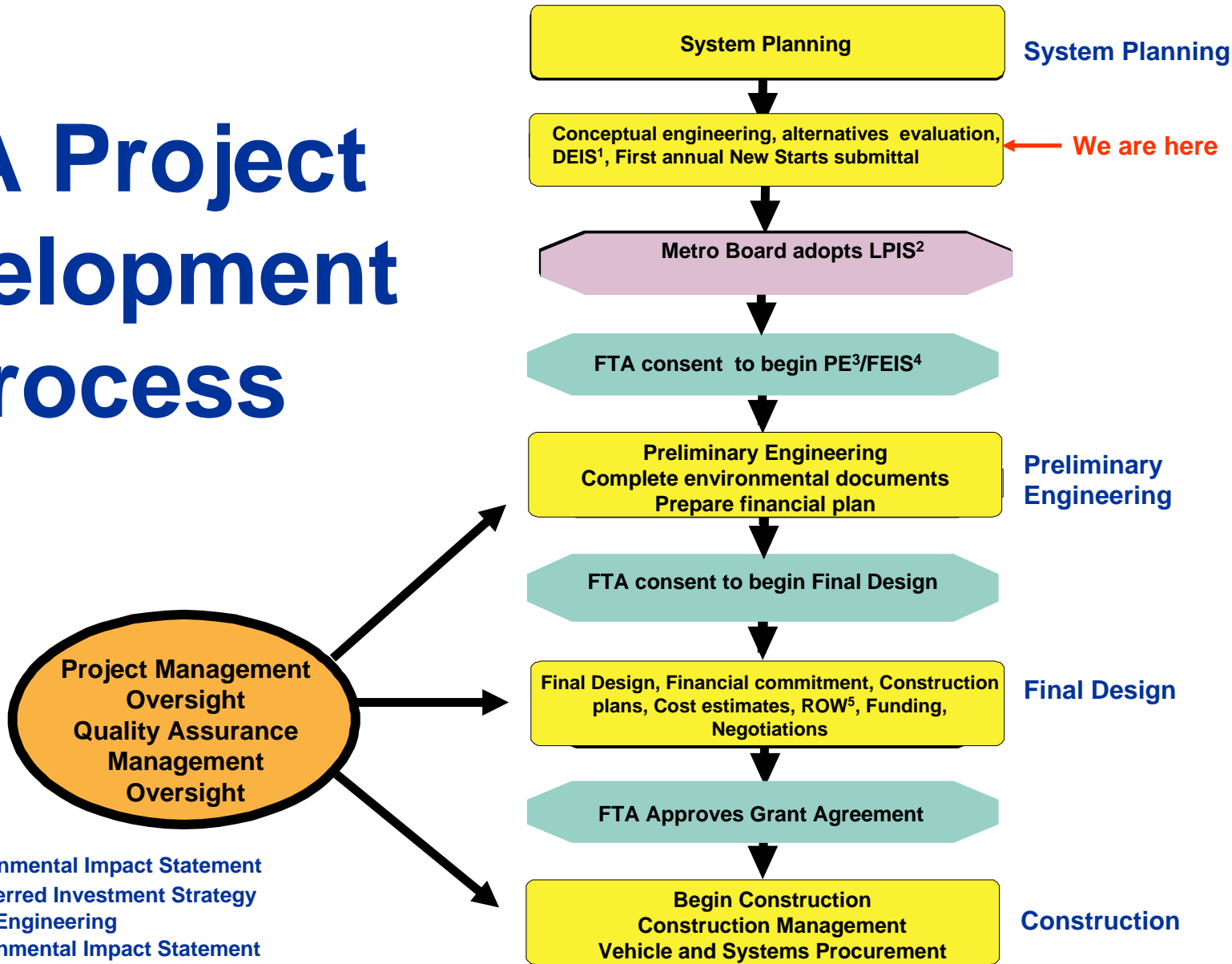


Project Development

FTA Project Development Process



- 1 – DEIS: Draft Environmental Impact Statement
- 2 - LPIS: Locally Preferred Investment Strategy
- 3 - PE: Preliminary Engineering
- 4 - FEIS: Final Environmental Impact Statement
- 5 - ROW: Right of Way

WHAT DOES THE NATIONAL ENVIRONMENTAL POLICY ACT (NEPA) MAKE US DO?

NEPA

...“The Congress authorizes and directs that, to the fullest extent possible, all agencies of the Federal Government... shall include... a detailed statement on alternatives to the proposed action...”

(The National Environmental Policy Act of 1969,
Sec. 102 [42 USC § 4332].)

FHWA / FTA NEPA REGULATIONS

It is the policy of the Administration that...alternative courses of action be evaluated and decisions be made in the best overall public interest base upon a balanced consideration of the need for safe and efficient transportation.

23 CFR771.105 (b)

NEPA (EIS*) Process

NOTICE OF INTENT
Start of Federal Process

SCOPING
• Range of Alternatives

DEIS
• Evaluate all reasonable alternatives

CIRCULATION

FEIS
• Identify Preferred Alternative
• Describe Mitigation Measures

RECORD OF DECISION

Purpose & Need

Corridor Issues

- **Traffic congestion**
- **Slow bus speeds / high ridership**
- **Economic development**
- **Major activity centers along corridor**
- **Other?**

Alternatives to be Considered

Technologies

- **Light Rail Transit (LRT)**
 - Electric – powered by overhead wires
 - Hybrid – self-powered vehicle, no overhead wires
- **Upgraded Bus Rapid Transit (BRT) - Bus operating in a fixed guideway with the same level of service as LRT, convertible to LRT in the future**
- **Enhanced Bus Service**
- **Other?**

Potential Evaluation Criteria

Issues to be Assessed (Environmental Impact Statement)

- **Business / residential access**
- **Traffic congestion / management**
- **Property acquisition**
- **Removal of trees / streetscape / aesthetics**
- **Flooding – improvements needed**
- **Parking for businesses / stations**
- **Safety**
- **Other?**

FTA New Starts

- **Ridership**
- **Travel time savings**
- **Capital costs**
- **O&M costs**
- **Financial feasibility**

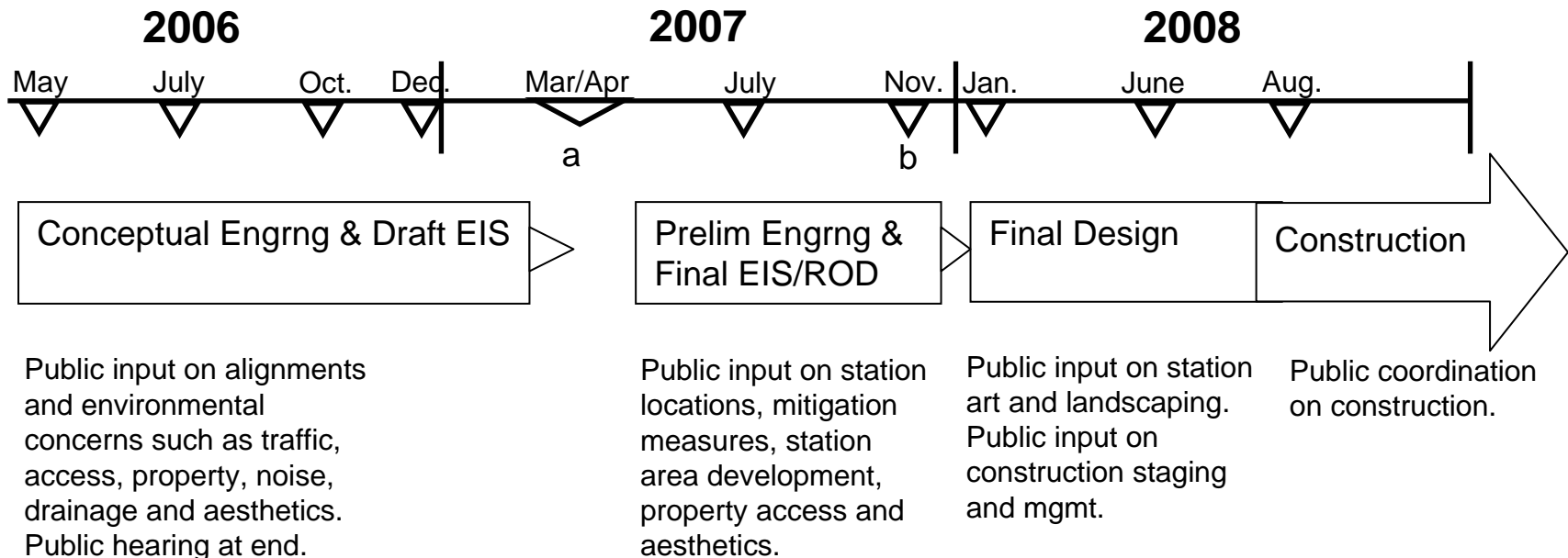
Local Decisions Are Based On

- **Trade off's among:**
 - **Ridership**
 - **Costs**
 - **Community impacts**
 - **Community input**

Next Steps

University Corridor Project Development Process and Public Input Opportunities

▽ - Public Input Intervals



Public outreach will take place through three primary categories: Residential groups, Business groups, Town Hall meetings. Ongoing interaction with stakeholders will occur.

- a. Formal public comment period on DEIS and public hearing
- b. Public availability, FEIS